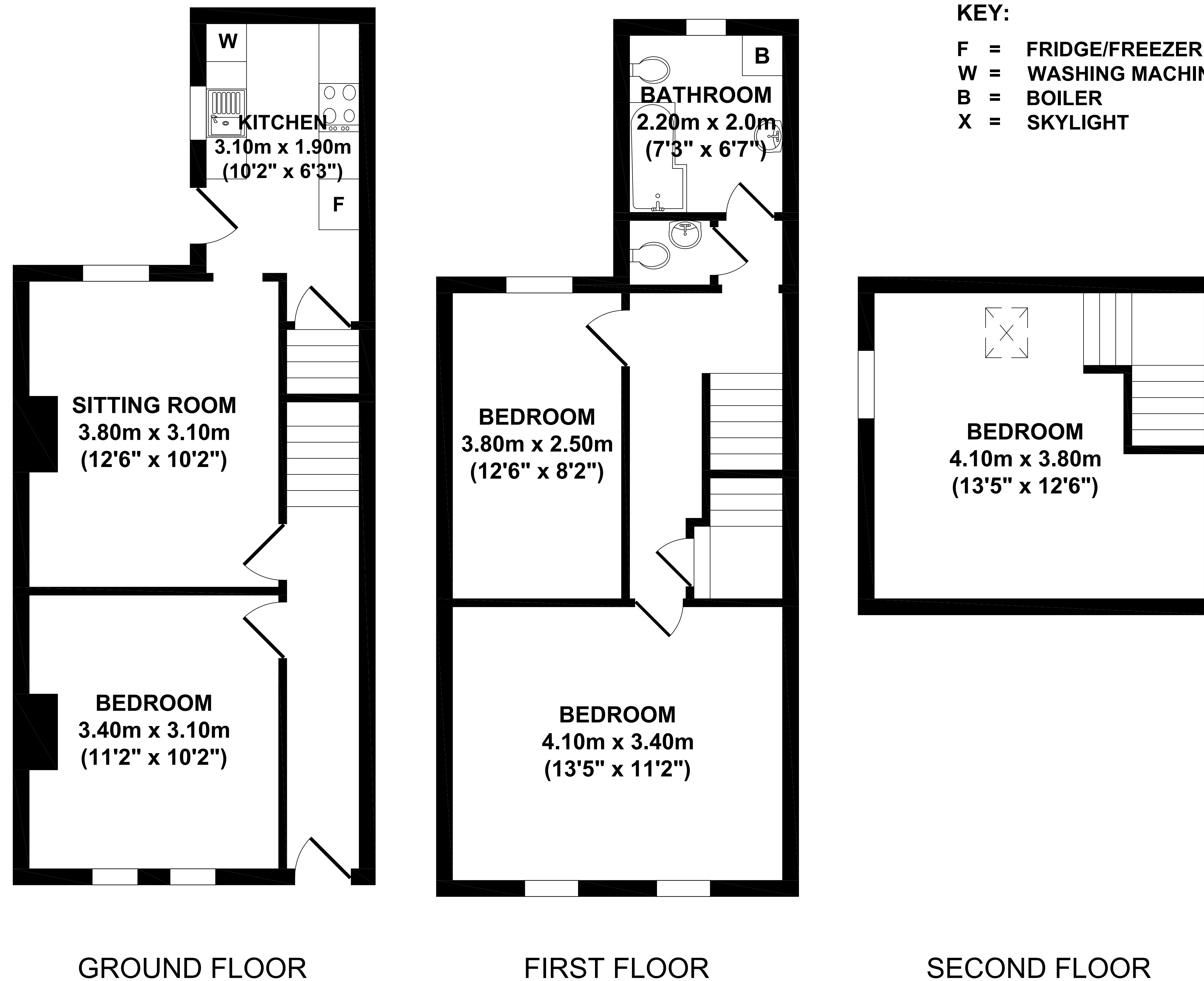


12 Chestnut Street, Loughborough



Whilst every attempt has been made to ensure the accuracy of the floor plan contained here, measurements of doors, windows, rooms and any other items are approximate and no responsibility is taken for any error, omission, or mis-statement. This plan is for illustrative purposes only and should be used as such by any prospective purchaser. The services systems and appliance shown have not been tested and no guarantee as to their operability or efficiency can be given.